

SRI LANKA INSTITUTE OF ADVANCED TECHNOLOGICAL EDUCATION (SLIATE)







S
L
I
A
T
E

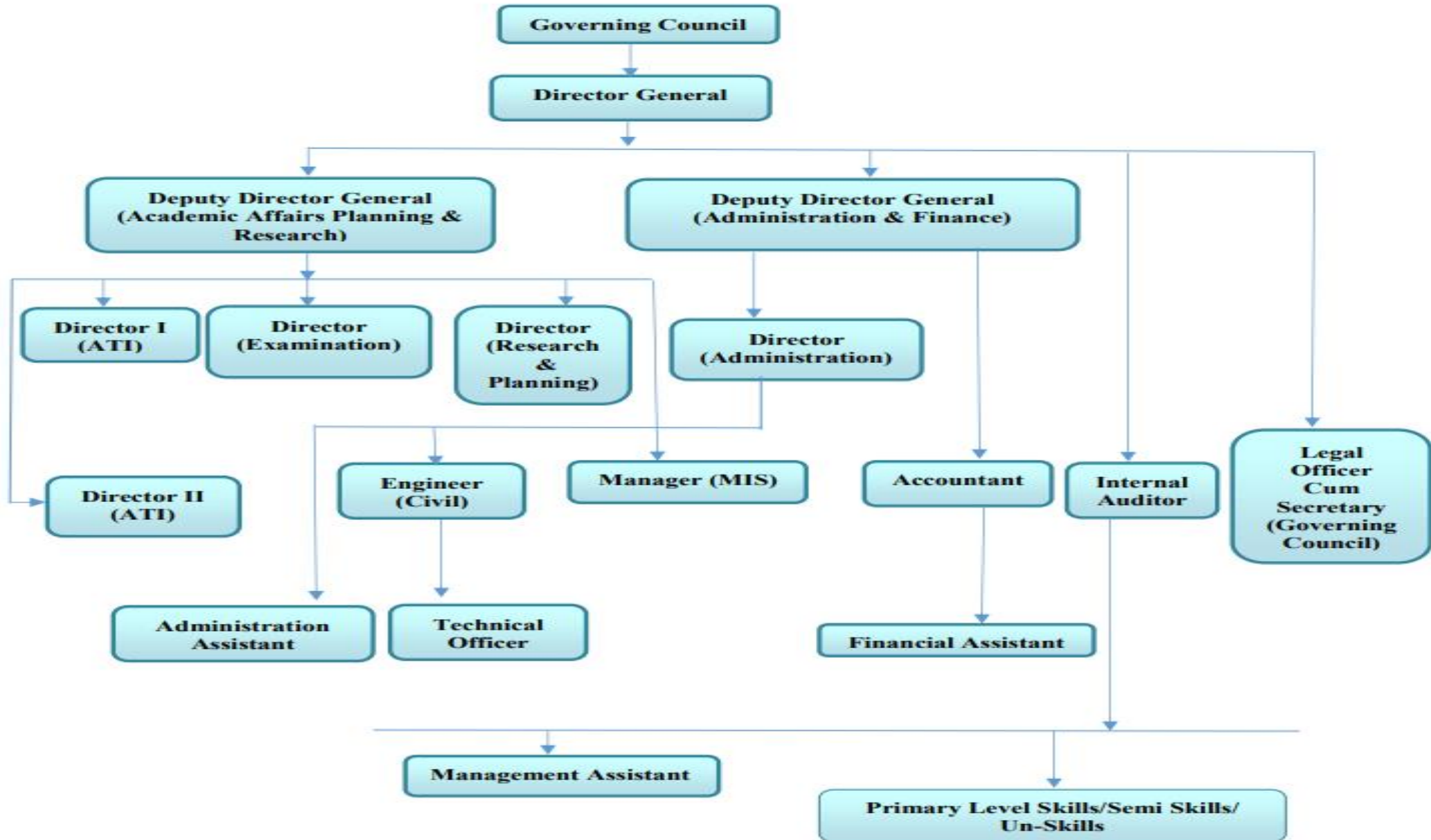
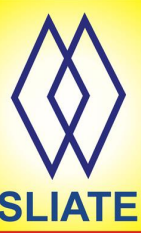
About us

Sri Lanka Institute of Advanced Technical Education (SLIATE) was formed in 1995,

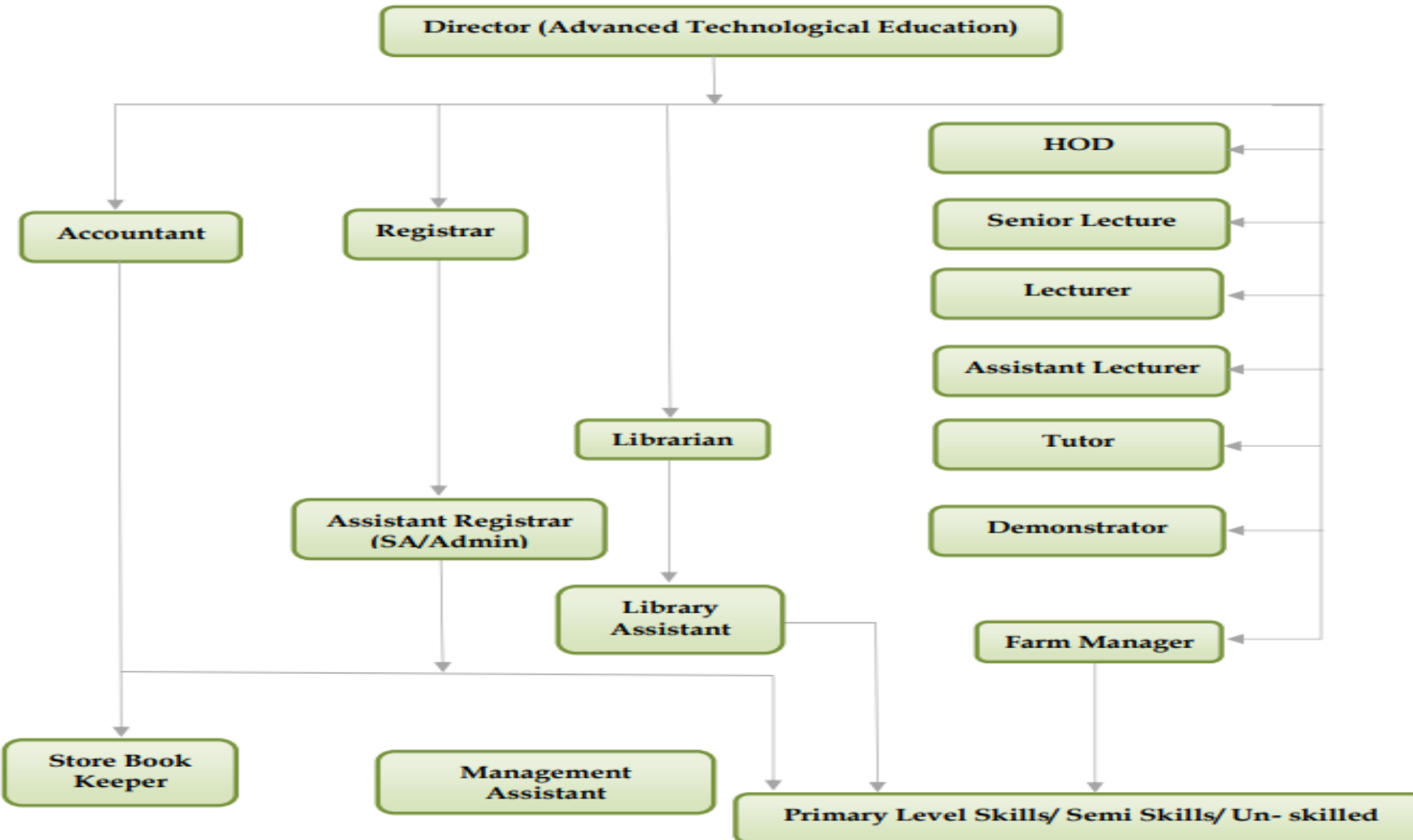
It functions as an autonomous Institute for the management of Higher National Diploma [HND] courses.

Currently nineteen [19] Advanced Technological Institutes [ATI] branches are in the country.

Organizational Structure - SLIATE



Organizational Structure - ATI



Network Map



- Head Office - Colombo 10
- ATI Ampara
- ATI Anuradhapura
- ATI Badulla
- ATI Batticaloa
- ATI Colombo
- ATI Galle
- ATI Gampaha
- ATI Jaffna
- ATI Kandy, Dambawela Premises
- ATI Kegalle
- ATI Kurunegala
- ATI Trincomalee
- ATI Ratnapura
- ATI Samanthurai
- ATI Tangalle

Cont...



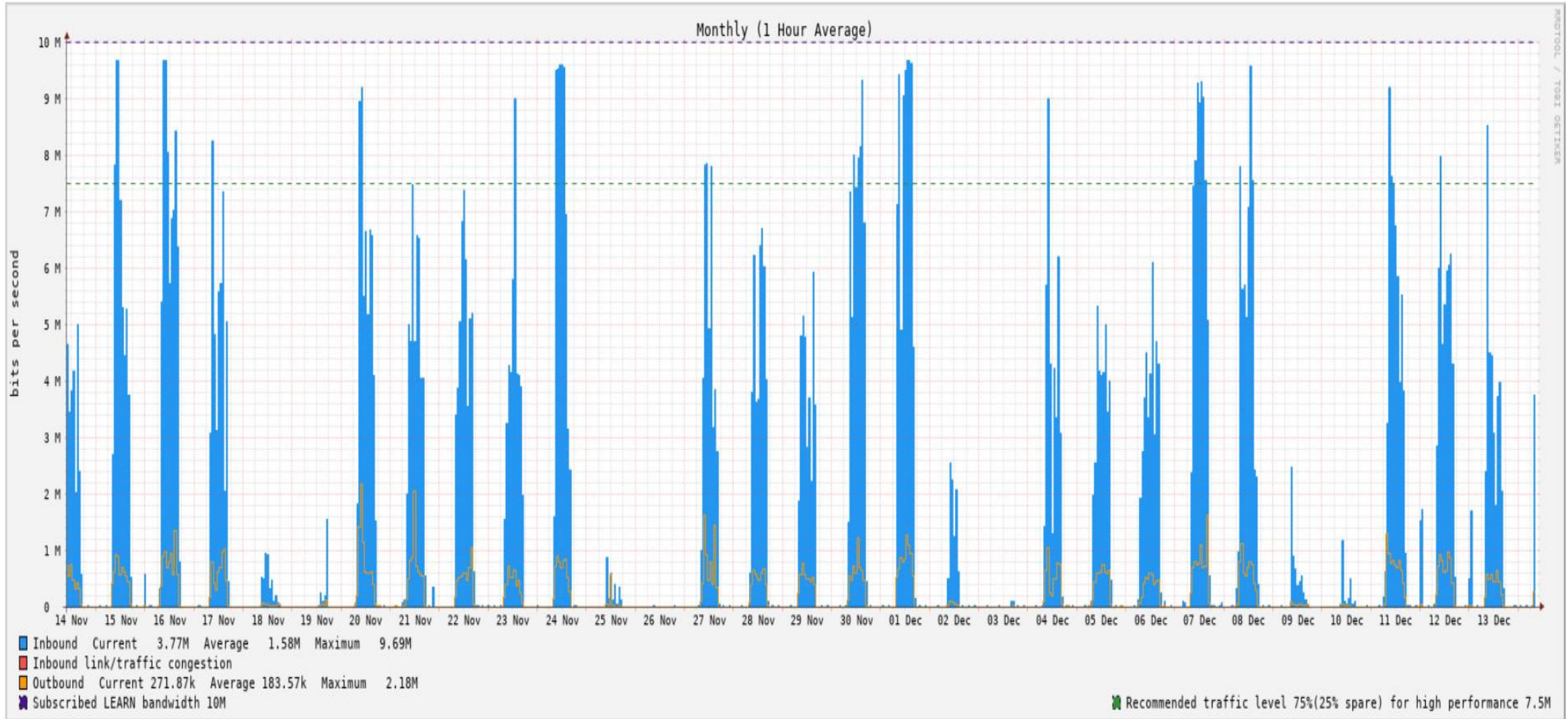
S
L
I
A
T
E



Internet Usage Graphs of Institutes



S
L
I
A
T
E

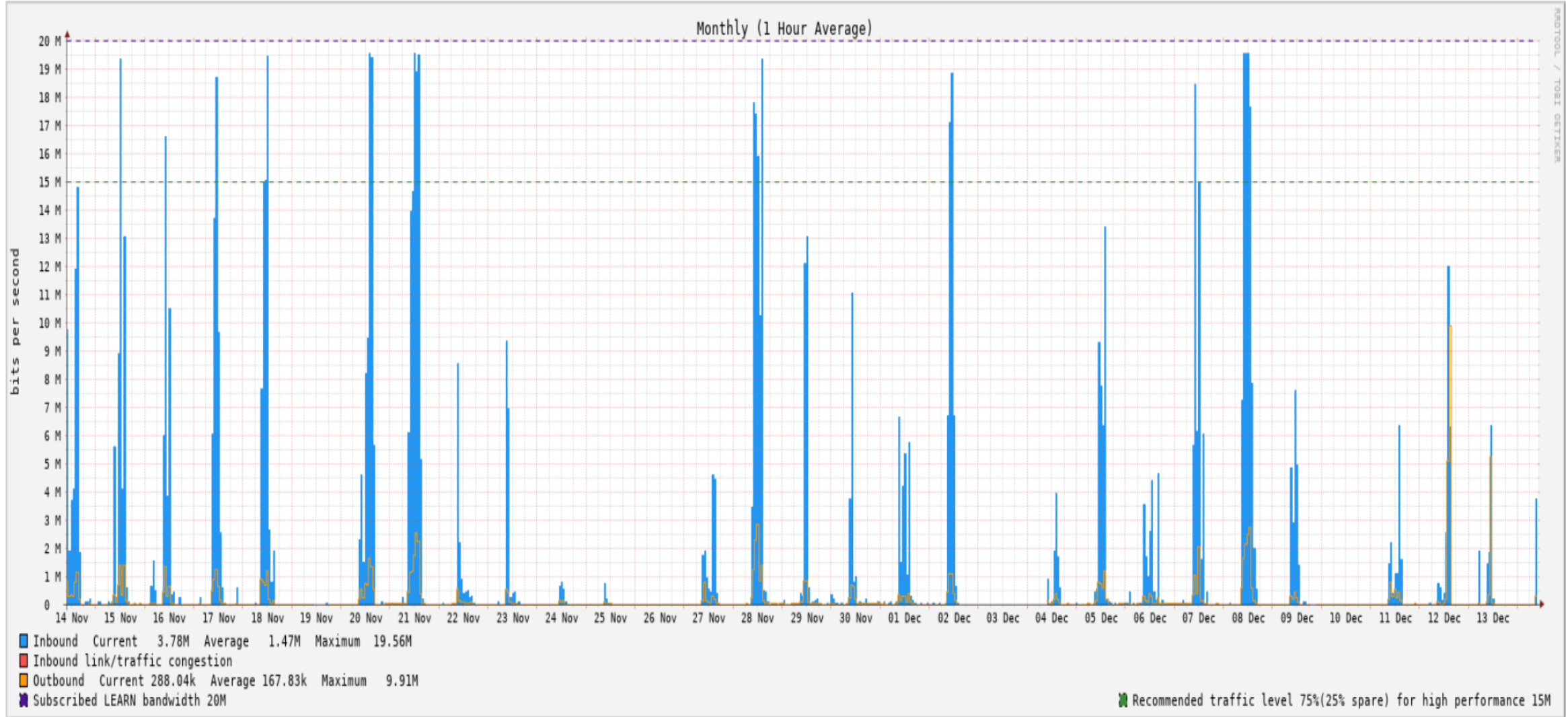


Head Office - Colombo 10

Cont...

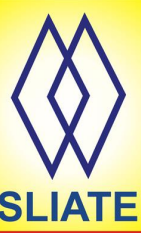


S
L
I
A
T
E

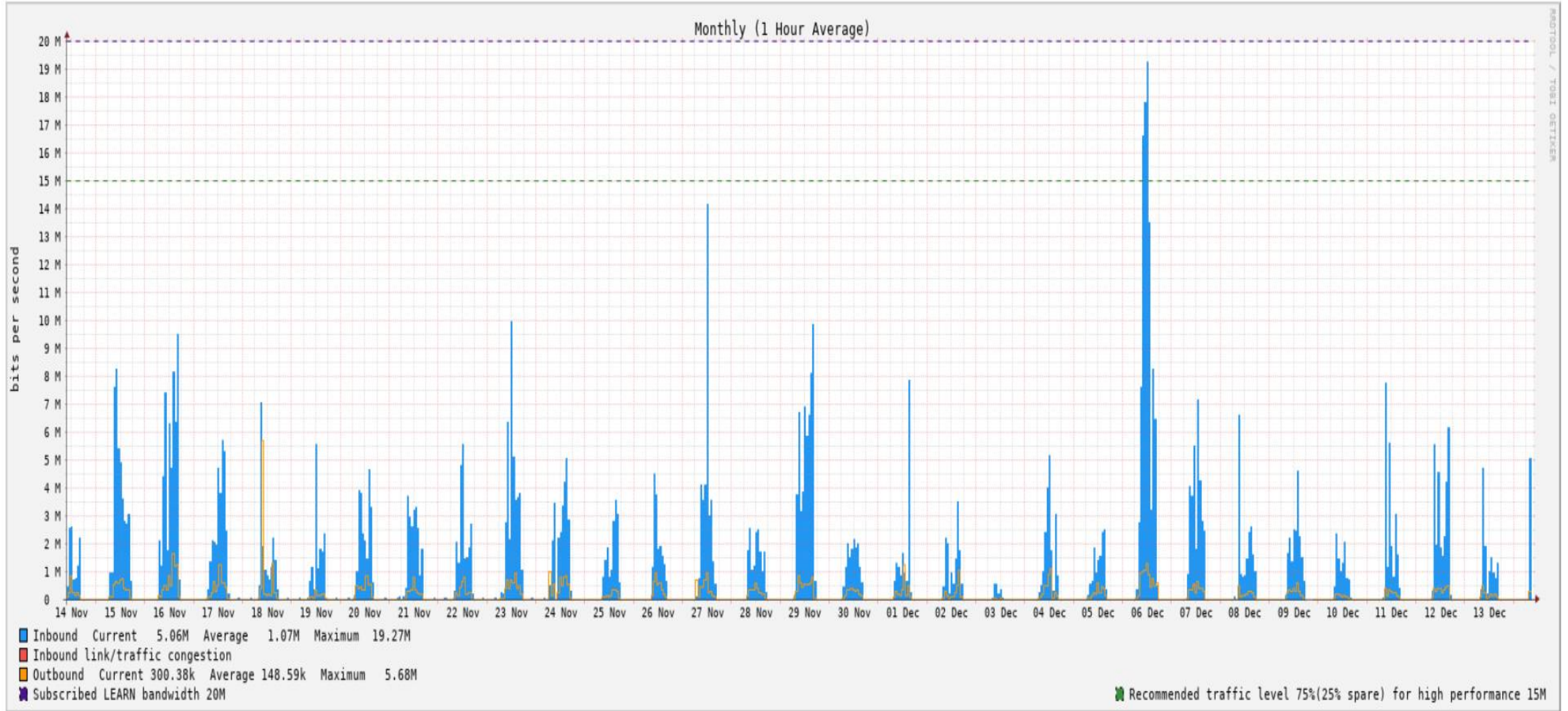


ATI - Kegalle

Cont...



S
L
I
A
T
E

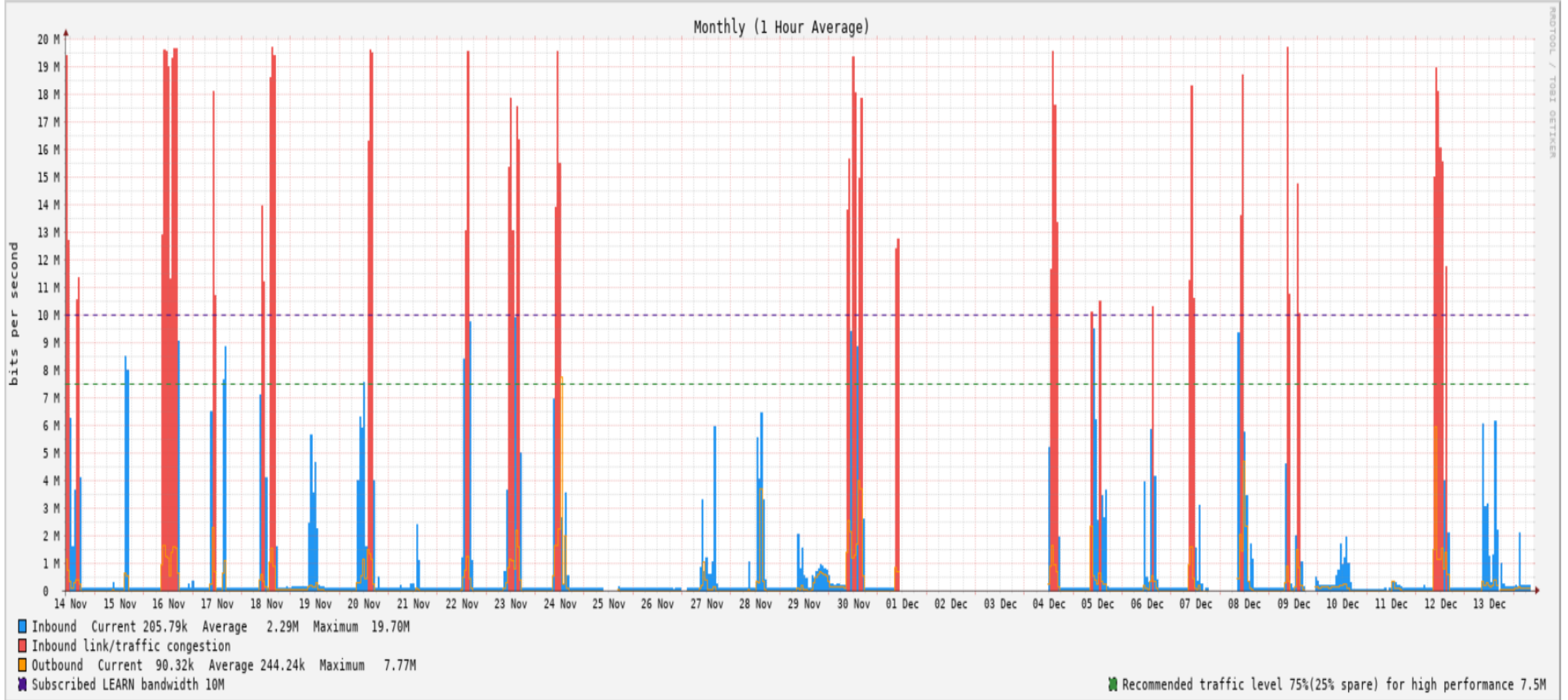


ATI - Kandy

Cont...



S
L
I
A
T
E

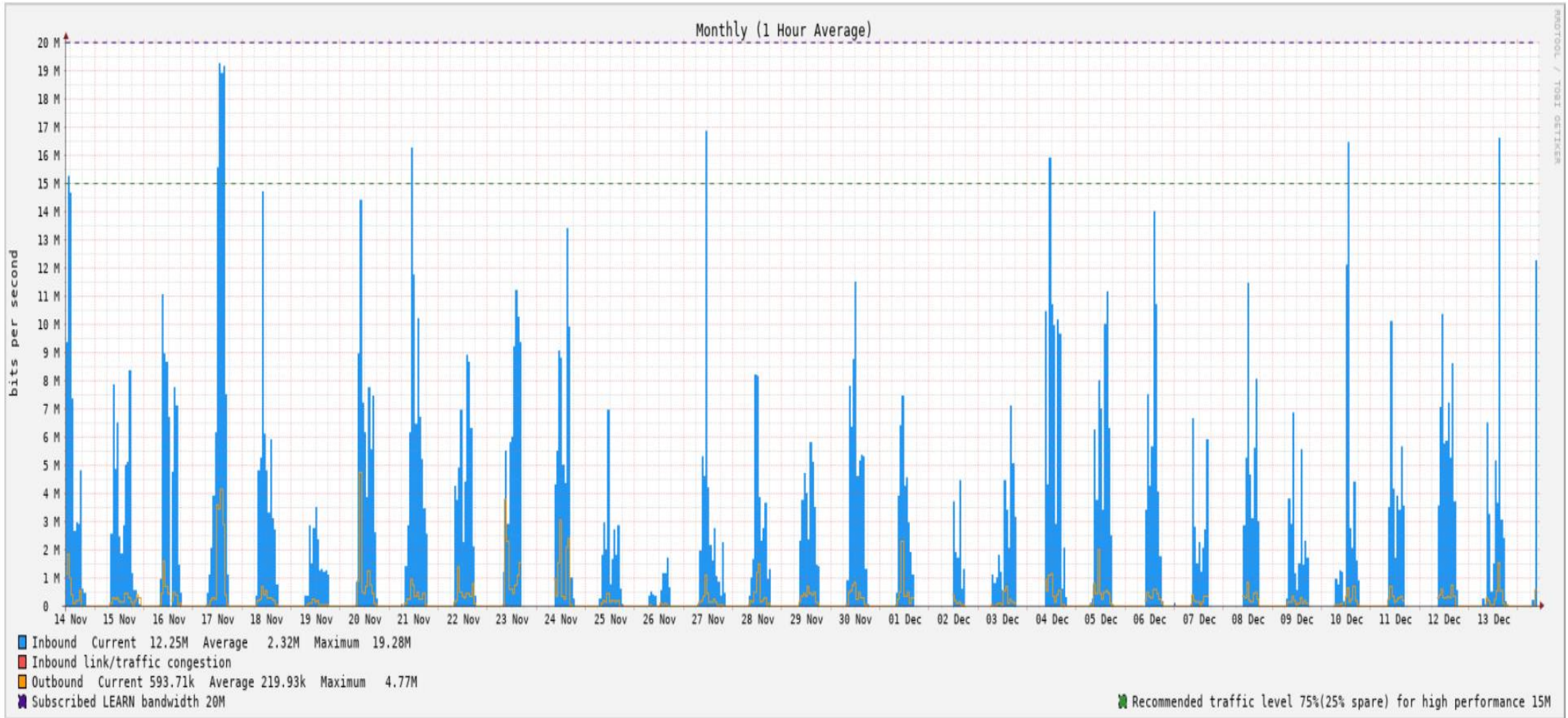


ATI - Badulla

Cont...

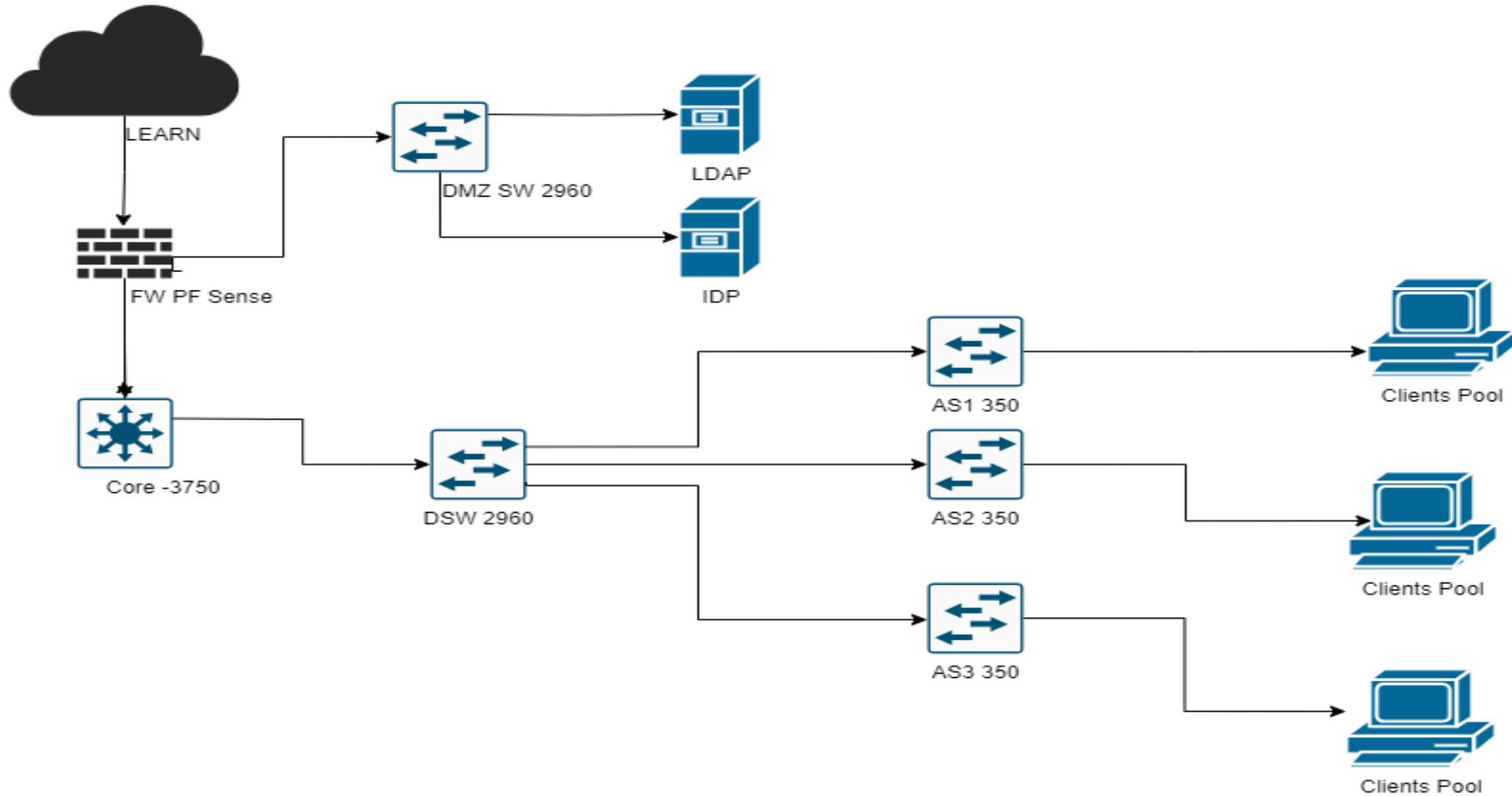


S
L
I
A
T
E



ATI Trincomalee

Network Diagram



Resources

- Over 60 concurrent users in Head Office SLIATE
 - Over 100 concurrent users in Advanced Technological Institutes
[Eg: Kegalle]
 - Over 80 users in Head Office
 - Over 800 users in Advanced Technological Institutes [Eg: Kegalle]
- (It can be vary for each institute)
- Average Internet Bandwidth - 20 mbps
 - Provide internet facility via LAN and Wireless technologies



S

L

I

A

T

E

Cloud Services

- [Web Server](#)
- [Student Management System](#)
- [Student Registration System](#)
- Google Cloud Email Service
- [KOHA Library Management System](#)
- [Moodle](#)



S

L

I

A

T

E

Local Servers

- Active Directory
- PF Sense
- IDP
- LDAP

Other Services

- CCTV System

Computer Laboratories



S
L
I
A
T
E



Ongoing and Future Implementations

Network consultation & restructure the whole Network

- Server and Network infrastructure
- Increase the bandwidth
- Convert existing flat network to a VLAN based network
- Introduce Network related cadre positions
- Expand network
- Linked Network

Challenges

- Recruitment restrictions & No cadre positions for Network field
- Barriers to Implementation of New Technology
- Outdated infrastructure / Less bandwidth
- Price and time to procure the required tools and technology
- Separate links

*Thank
you*

