

# Lanka Education and Research Network

---

## Network Management & Monitoring

Sri Lanka

11<sup>th</sup> -15<sup>th</sup> March 2019

*Workshop on Campus Network Best Practices*

D.I.K.Solangaarachchi /  
FoM,UoK

# Network Management & Monitoring

---



# Definition

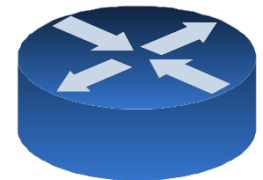
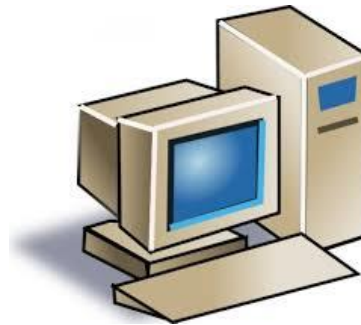
---

Network monitoring is the use of a system that constantly or periodically monitors a computer network for slow or failing components and that notifies the network administrator in case of outages or other trouble

# What we monitor

---

- Routers
- Switches
- Firewalls
- Servers
- VMs
- Many more



# Why monitor

---

- The network is the life line of the IT infrastructure.
- When networks fail, the flow of information required by applications and business operations stop.
- When network problems arise, Network Admins are pressured to identify the root cause before it impacts users, applications and the business.

# Precisely monitor for

---

- Any faults
- Check the performance level
- Report issues
- Eliminate the need for manual checks
- Proactive approach
- Track trends

# Functions of Network Monitoring system (NMS)

---

1. Discover
2. Map
3. Monitor
4. Alert
5. Report

- NMSs differ in the capabilities they delivery for each of these functions.

# Functions of NMS

---

## **Discover: Find the Devices on Your Network**

Network monitoring begins with the discovery process.

Simply put, if you don't know what's on the network and how its all connected, you can't monitor it.

NMSs discover the devices on the network

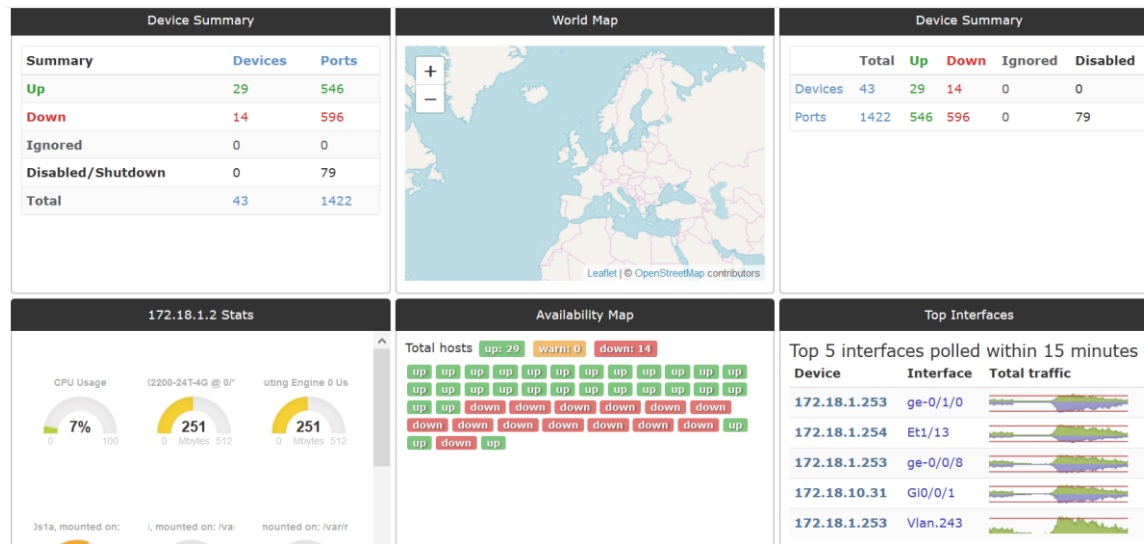


# Functions of NMS

## Map: Visualize Your Network

A network admin's eyes are their most valuable diagnostic tool.

Their ability to visualize their networks can save hours, and even days troubleshooting network problems.



# Functions of NMS

## Monitor: Keep an Eye on Your Network

NMSs expose network admins to a large selection of monitors

Sensor		Current	Low Limit	High Limit
FPC: EX2200-24T-4G @ 0/*/*		29 °C	19°C	49°C
FPC: EX2200-24T-4G @ 0/*/*		29 °C	19°C	49°C
FPC: EX2200-24T-4G @ 0/*/*		29 °C	19°C	49°C
FPC: EX2200-24T-4G @ 0/*/*		29 °C	19°C	49°C
Routing Engine 0		29 °C	19°C	49°C
Routing Engine 0		29 °C	19°C	49°C
Routing Engine 0		29 °C	19°C	49°C
Routing Engine 0		29 °C	19°C	49°C
Gi1/0/25 Module		53 °C	0°C	0°C
Level 1 Virtual Module #1		0 °C	-10°C	0°C
Level 2 Virtual Module #-1		0 °C	-10°C	0°C
FPC: EX2200-24T-4G @ 0/*/*		27 °C	17°C	47°C
Routing Engine 0		27 °C	17°C	47°C

# Functions of NMS

---

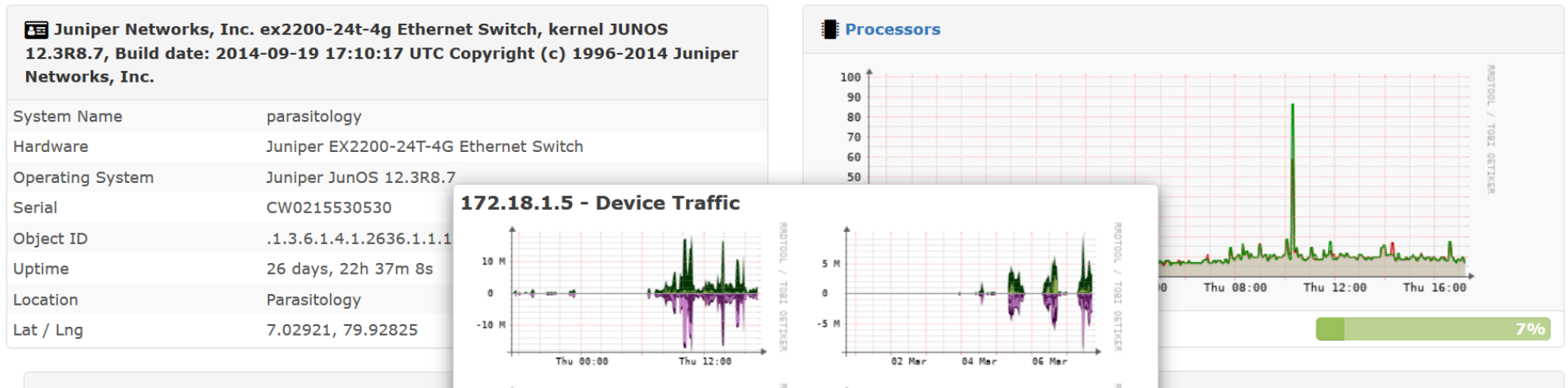
## **Alert: Get Notified When Devices Go Down**

NMS notifies when something goes wrong.

They deliver alerts via email, text and logging.

# Functions of NMS

## Report: Deliver Real-time and Historical Reporting



# Network Monitoring Tools

---

## **Realm of Network Monitoring Tools, Software and Vendors is Huge**

To say the least. New software, tools and utilities are being launched almost every year to compete in an ever changing marketplace of IT monitoring and server monitoring.

# Network Monitoring Tools

---

## Open Source

- Cacti
- LibreNMS
- Nagios
- Zabbix

## Commercial

- Solarwinds
- GFI LanGuard
- Microsoft Network Monitor
- PRTG

# Network Monitoring Tools

---

## Top Open-Source Network Monitoring Tools of 2019:

1. Nagios
2. Zabbix
3. Incinga
4. Libre NMS
5. Pandora FMS

# Top Open-Source NMS of 2019:

---

## Nagios

The best way to describe Nagios is the grandfather of network monitoring because it has been around for so long (18 years).

By default, all the configuration (e.g. adding hosts and services to be monitored) for Nagios is done through text files.

This can take some time to get used to resulting in a steep learning curve and thus, reduces its attractiveness to new users



# Top Open-Source NMS of 2019:

---

## Zabbix

Zabbix is a strong contender of Nagios. Even though they started later than Nagios, interest for Zabbix has steadily increased over time.

This is probably because Zabbix is generally easier to manage than Nagios – out of the box, Zabbix already provides many of the features that you will need plugins for in Nagios.

Configuration on Zabbix is done through a web interface

# Top Open-Source NMS of 2019:

---

## Inchinga

Icinga has a nice and responsive web interface although configuration is still done through text files (except you use a plugin).

# Top Open-Source NMS of 2019:

---

**LibreNMS**

# Top Open-Source NMS of 2019:

---

## Pandora FMS

manage many facets of your network infrastructure, including Bandwidth usage/monitoring of Switches, Routers, Modem's and other gateway and network devices

On top of just monitoring bandwidth usage, Pandora offers a server monitoring solution with their wide-array of plugins for popular programs and systems including Microsoft Exchange Server, Oracle, Tomcat.

# LibreNMS

---

- SNMP-based auto-discover network monitoring
- Derived from another project (Observium)
- Written in PHP as a web application
- Includes support for a wide range of hardware:–
  - Cisco, Linux, FreeBSD, Juniper, Brocade, Foundry, HP and many more
- GNU General Public License V3 (GPLv3)

# Available metrics

---

- CPU Memory and storage statistics
- Interface traffic
- Packet and detailed error statistics
- Temperature, fan speed, voltage, amperage, power humidity and frequency sensors
- Users, processes, load average and uptime statistic

# Features

---

- Linux distribution detection
- Real-time interface traffic graphing
- Device inventory collection
- Detailed IPv4, IPv6, TCP and UDP stack statistics
- BGP and OSPF information
- MAC <-> IP address information

# Philosophy


---


- LibreNMS' approach is that the network monitoring shouldn't take long to set up
- Configure equipment correctly and LibreNMS will do the rest
- Concept of enabled vs. ignored



# Network Management & Monitoring

---



**LibreNMS** 

FACULTY OF MEDICINE, UNIVERSITY OF KELANIYA

  
  
 Remember Me

Unauthorised access or use shall render the user liable to criminal and/or civil prosecution.

# Network Management & Monitoring

nms.medicine.kln.ac.lk/settings/sub=alerting/ 80%

Overview Devices Ports Health Wireless Routing Alerts

46

Enable email alerting	<input checked="" type="checkbox"/>	?
How to deliver mail	smtp	?
From name	indrajithso	?
From email address	indrajithso@gmail.com	?
Use HTML emails	<input checked="" type="checkbox"/>	?
SMTP Host	smtp.gmail.com	?
SMTP Port	587	?
SMTP Timeout	10	?
SMTP Secure	tls	?
SMTP Auto TLS Support	true	?
SMTP Authentication	<input checked="" type="checkbox"/>	?
SMTP Authentication Username	indrajithso@gmail.com	?

# Transfer to another server

---

1. mysql DB
2. RRD files
3. Config.php

```
mysqldump -u root -p librenms > /home/solanga/libre.sql
```

# LibreNMS Android APP

---

- myLibreNMS

# Lanka Education and Research Network

---

Thank You

D.I.K.Solangaarachchi /  
FoM,UoK

Email: [solanga@kln.ac.lk](mailto:solanga@kln.ac.lk)

---