

SRIPALEE CAMPUS

Current NETWORK STATUS

Sagarika Wickramasekera

Proposed Fiber Layout Plan For Sri Palee Campus – University Of Colombo

The map illustrates the proposed fiber optic network for the Sri Palee Campus of the University of Colombo. The layout shows a central backbone with various buildings connected via fiber optic cables. The buildings are labeled as follows:


- Main Gate
- Performing Arts
- Mass Media
- Establishment
- Finance
- Maintenance
- Research Unit
- Gas Cooler
- AV unit
- Cultural Center
- Library
- Proposed Student center
- Music/ Health

The fiber layout is divided into two main sections by a road. The left section includes buildings 1 through 4, and the right section includes buildings 5 through 9. A legend in the bottom right corner defines the symbols used:

- SM – Single mode fiber
- MM – Multimode fiber
- 8 core SM – Solid line
- 24 core MM – Dashed line
- 8 core MM – Dotted line
- Man-holes – Blue square
- Hand-holes – Orange square

Distances between buildings are marked along the fiber paths. For example, the distance between the Main Gate and the Performing Arts building is 20m, and the distance between the Performing Arts building and the Mass Media building is 20m. The distance between the Mass Media building and the Establishment building is 24m. The distance between the Establishment building and the Finance building is 15m. The distance between the Finance building and the Maintenance building is 15m. The distance between the Maintenance building and the Research Unit building is 45m. The distance between the Research Unit building and the Gas Cooler building is 20m. The distance between the Gas Cooler building and the AV unit building is 10m. The distance between the AV unit building and the Cultural Center building is 45m. The distance between the Cultural Center building and the Library building is 21m. The distance between the Library building and the Proposed Student center building is 46m. The distance between the Proposed Student center building and the Music/ Health building is 34m. The distance between the Music/ Health building and the Main Gate building is 60m.

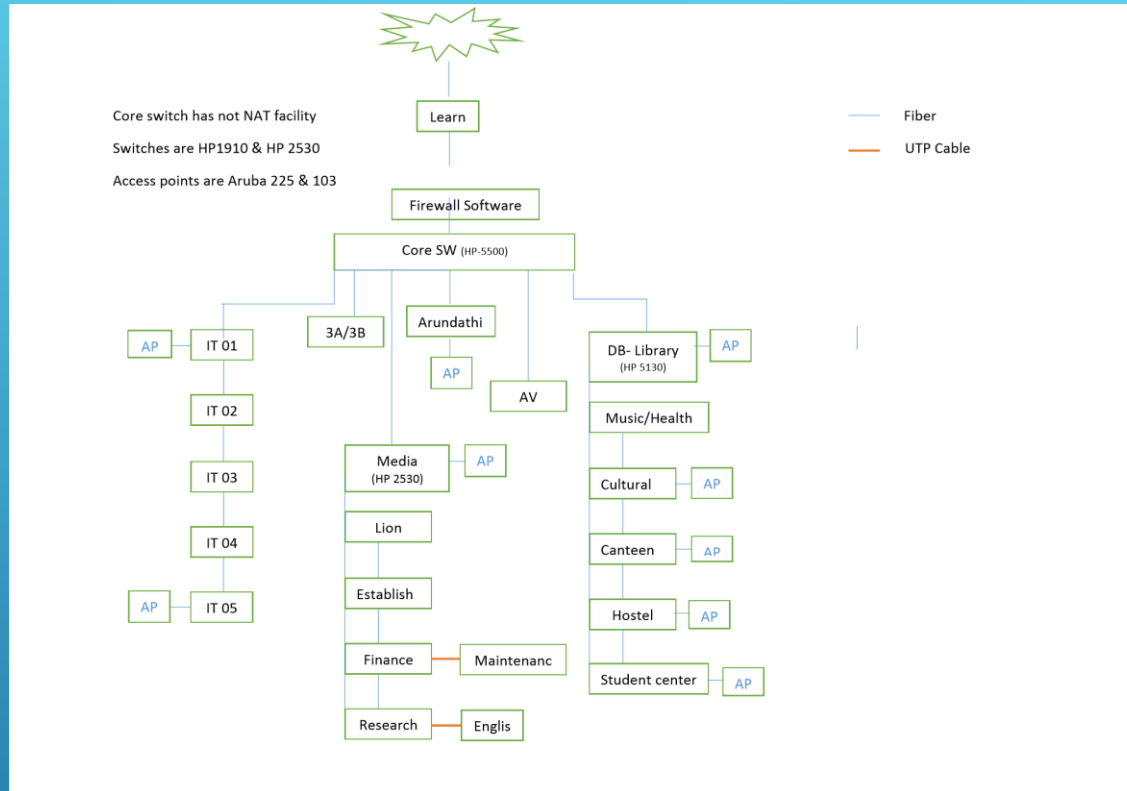
MM- Multimode fiber

Score 3M 

24core MM _____

3 core MM

■ Man-holds



CURRENT LAYOUT



Diagnostics: pTop

Sort type:

pTop: Up State 1-3267/3267, View: default, Order: source addr

PA	D SRC	DEST	STATE	AGE	RXP	PKTS	BYTES
udp	I 0.0.0.0:48	255.255.255.255:47	0:1	13	47	1	328
tcp	I 2.36.13.132:1136	172.22.22.202:51413	4:4	37236	50965	1471	858K
tcp	O 2.36.13.132:1136	172.22.22.202:51413	4:4	37236	50965	1471	858K
tcp	I 2.91.87.191:17433	172.22.22.202:51413	4:4	68396	19017	38	6176
tcp	O 2.91.87.191:17433	172.22.22.202:51413	4:4	68396	19017	38	6176
tcp	I 2.120.1.88:50219	172.22.22.202:51413	4:4	60538	26733	40	4060
tcp	O 2.120.1.88:50219	172.22.22.202:51413	4:4	60538	26733	40	4060
tcp	I 2.120.1.88:51778	172.22.22.202:51413	4:4	58973	28352	34	4498
tcp	O 2.120.1.88:51778	172.22.22.202:51413	4:4	58973	28352	34	4498
tcp	I 2.120.1.88:53374	172.22.22.202:51413	4:4	57429	29848	38	4375

CURRENT MONITORING TOOLS

- ▶ Lightning issues
- ▶ Lack of infrastructure
- ▶ Awaiting for hardware firewall

PROBLEMS