

Lanka Education and Research Network

Academic Networks

11th March 2019
at

Information Technology Center

Network Operation Center
(LEARN)

Contents

- Introduction
- Well know R&E networks
- APAN network
- TEIN

What is an Academic (R&E) Network

- Research and Education Network
 - To support needs of research and education around the globe
 - Remote teaching/learning, research, research/academic collaboration, R&E content sharing delivery, etc
- National Research and Education Network (NREN)
 - To support needs of research and education community within the country
 - To provide connectivity to outside NRENs
- In General
 - Usually distinguished by support for high-speed backbone network.
 - Offering dedicated channels for individual research project

Internet vs R&E Network

- Do we need separate network for R&E. Can't we use Internet for R&E needs
 - Internet is kind of shared network by the public
 - Speed/bandwidth can not be guaranteed for a given source and destination
 - None of us know what is happening to R&E data on the road
 - Quick provisioning of dedicated bandwidth for specific project may not be easy
 - Regional or local internet policy may affect the R&E needs

Well known R&E Networks

- JANET
 - is the main backbone network for the UK university system of academic and research computers.
 - It is operated by UKERNA (United Kingdom Education & Research Networking Association)
 - Serving over 8 millions users
 - busiest National Research and Education Network (NREN) in Europe, carrying over 1.5 PBytes of information annually
 - more than 30,000 km of access circuits



Well known R&E Networks

- Internet 2
 - ▶ Internet2 is a not-for-profit United States computer networking consortium led by members from the research and education communities, industry, and government
 - ▶ Has over 500 members including 251 higher education institutions, 9 partners and 76 members from industry



Regional NRENs (well established)

- Asia Pacific

- Australian research and education network
- Malaysian Research and Education Network
- Singapore Advanced Research and Education Network
- Education & Research Network of India
- APAN-JP
- Bangladesh Research and Education Network
- Pakistan Research and Education Network
- Nepal Research and Education Network



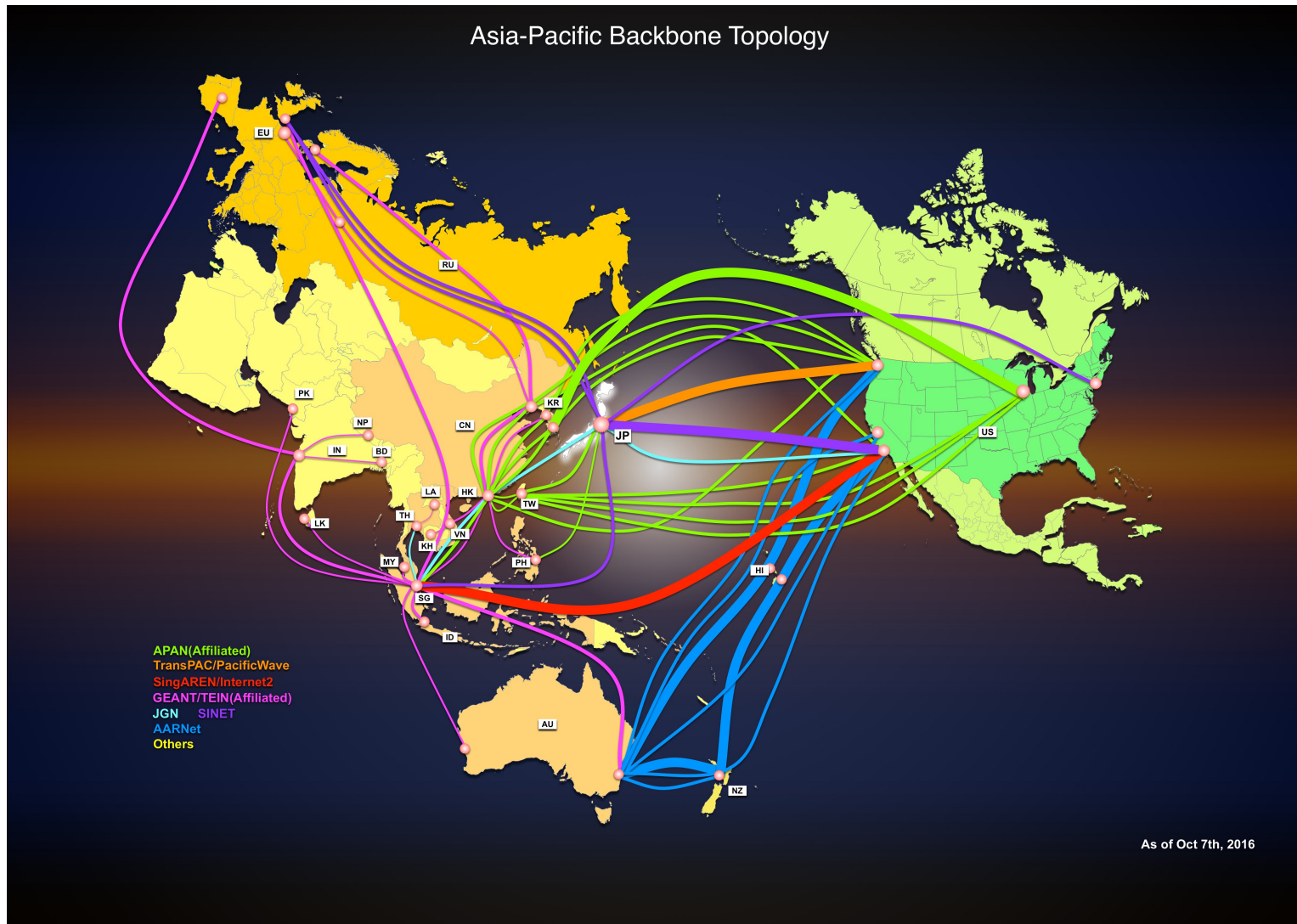
NREN of Sri Lanka

- Do we have a NREN ?
LEARN
 - LEARN – Lanka Education and Research Network
- When it was initiated ?
 - 30 years ago, going to celebrate 30th anniversary end of July
- What it does ?
 - interconnects Educational and Research institutions across the country, and provide network related services to them

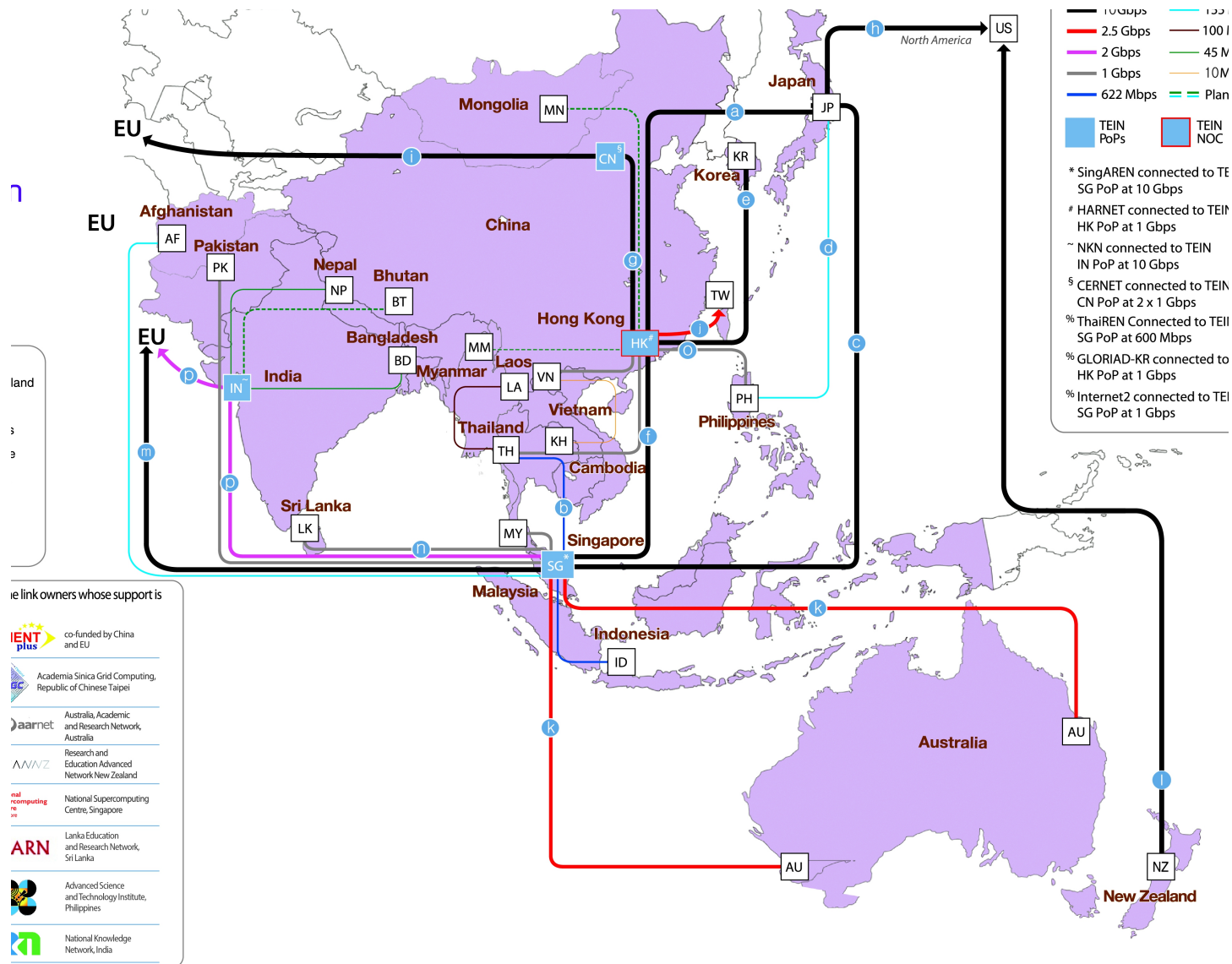
NREN Interconnection

- Isolated NREN in different countries
- Need high speed backbone connect them together
 - APAN
 - APAN (the Asia Pacific Advanced Network) refers to both the organization representing its members, and to the backbone network that connects the research and education networks of its member countries/economies to each other and to other research networks around the world
 - TEIN (Trans-Eurasia Information Network)
 - provides dedicated high-capacity internet connectivity for research and education communities across Asia-Pacific

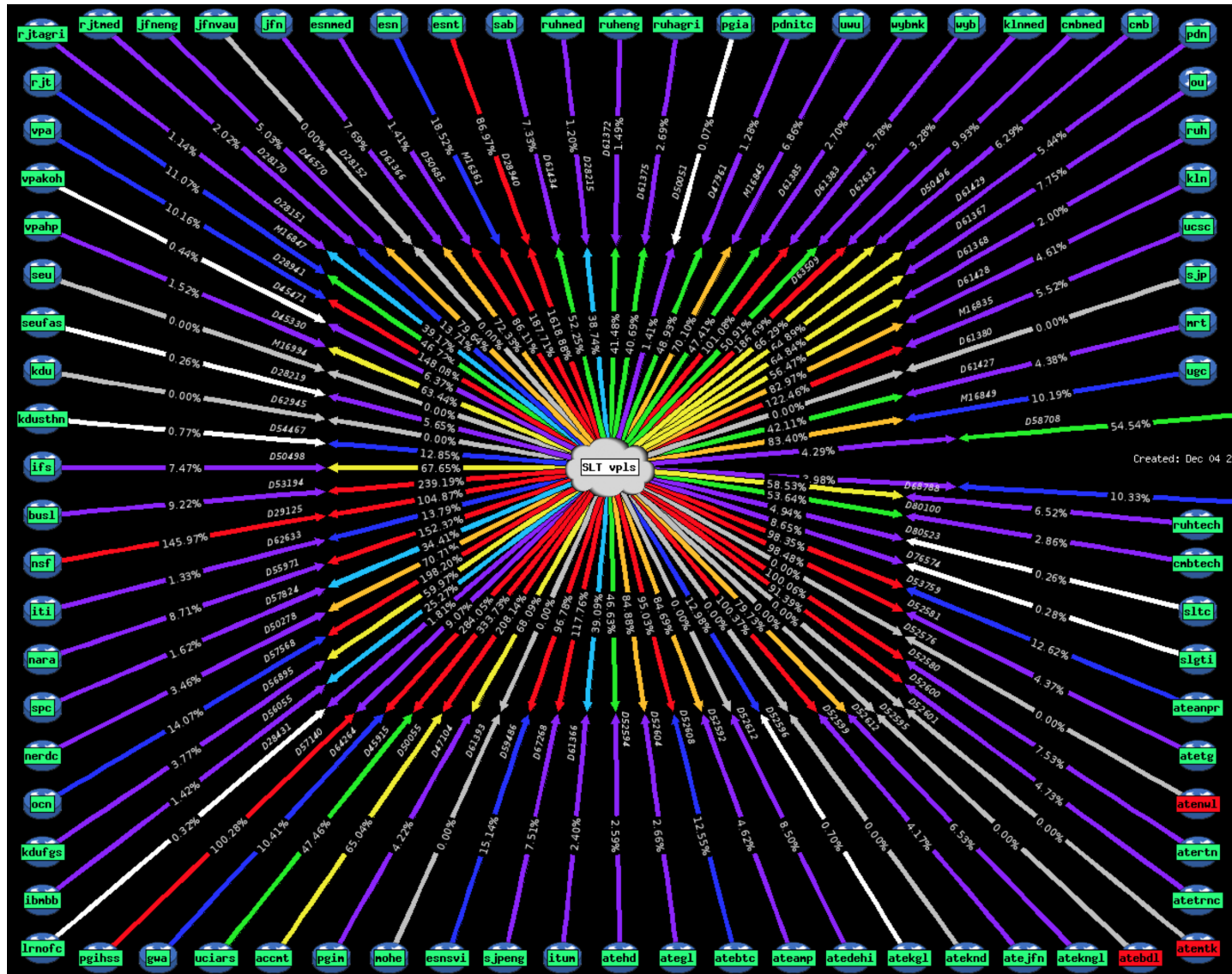
Asia-Pacific Backbone Topology



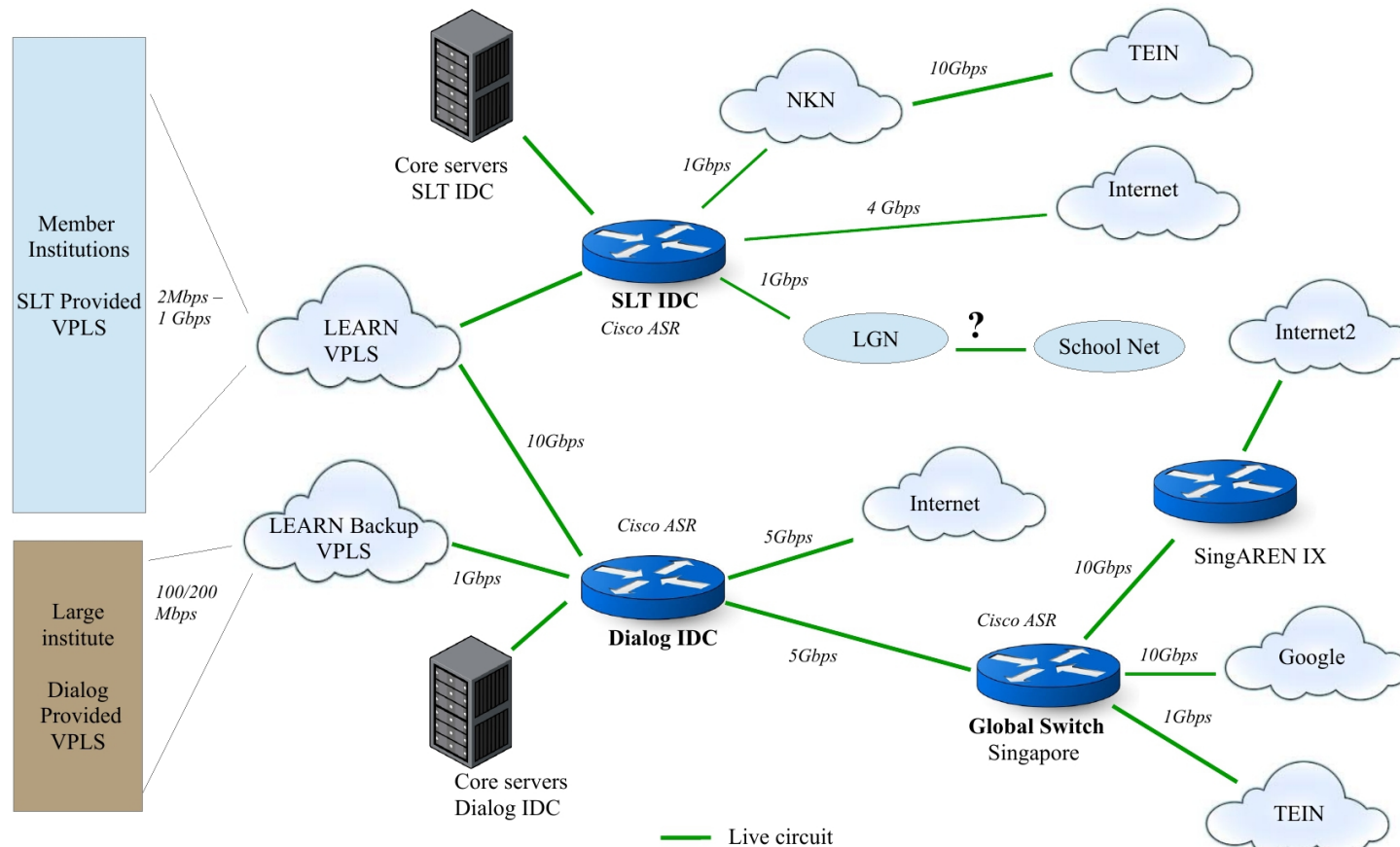
TEIN Backbone Topology



LEARN Backbone



LEARN Network



LEARN Network as at December 2019

LEARN Services

- Commodity Internet Access
- **Academic Internet**
- Email relaying, spam filtering
- DNS/DNS hosting (.ac.lk)
- VOIP
- Video Conferencing
- Eduroam
- Federated Identity Access (LIAF)
- Technical Assistance Center
- Training
- Collaboration supports

Backbone Upgrade (a project ongoing)

- Start from January
- Priority to those you have responded to the LEARN upgrade proposal
- Every institutional circuit is going to be **double** with no additional cost
- LEARN provided router in your institutes may be upgraded
- Your assistance to the LEARN is important

Backup Links (a project ongoing)

- To avoid single point of failure at the institutions
- Provide an active low bandwidth backup links (100Mbs, 200Mbps)
- New VPLS from a different ISP
 - New VPLS to connect institute through a complete independent physical network
 - Through Dialog fibers
 - Initially 4 institutions going to be connected at speed of 100Mbs or 200Mbps
 - UoM, PDN, KLN, SJP
 - Others are welcome to accept the given proposal, can be connected at any time
- Every campus owned a primary link over 300Mbps get a backup
 - > 300Mbs – get 100Mbs
 - > 1GMbs – get 200Mbs
 - It is free of charge

Backup Links Implementation Process

- Dialog team visit your institute for a survey
- You have to show them
 - termination location
 - fiber path deferent from your primary SLT fiber path
- Dialog will provide you a cable path map in written
- You have to get it approved from the institution
- Dialog lay the fiber
- LEARN will provide you the connectivity
- You can test it and connect to your network to use it in a way you interested.

LEARN TAC

- LEARN Technical Assistance Center
 - To provide remote technical support to LEARN member institutes
 - LEARN may visit an institute not more than three times a year
 - How an institute be qualified to obtain LEARN TAC service
 - have a dedicated person who is in computer application assistance or higher level
 - have a Laptop or a PC with 3G/4G dongle and a mobile phone or a LAN phone for communication
 - Domain to be addressed
 - Assistance to develop institutional infrastructure
 - Design networks, provide technical specifications for them to prepare tenders
 - Remote configuration of network devices, servers which are used for network services (NAT, proxy, email, DNS, VOIP, Eduroam, monitoring)
 - Assistance to handle security incidence

LEARN TAC

- Domains not going to be touched
 - shall not do physical installation of cables and network/server/computer hardware
 - shall not be asked to involve in troubleshooting of servers where the institutional confidential/critical data are stored (for examples: LMS, MIS, Account system, etc)
 - It shall not develop web sites or software for institutions

- More interesting on
 - deployment of new technologies
 - IPv6
 - eduroam
 - VOIP

LEARN TAC during its first year

- › Onsite help for NIFS in restructuring their network to include VLAN's and IPv6
- › Onsite guidance in merging LEARN subnet with UoP network using pfsense in PGIHS, UoP
- › SIP trunking in KLN
- › Onsite guidance in designing campus network for Faculty of Technology, Ruhuna
- › Guidance in installing eduroam in ITI, Faculty of Medicine- Ragama
- › Guidance in installing IPv6 for ITI
- › Guidance in resolving hacking attempts in multiple institutes

Lanka Education and Research Network

Thank You

Senevi Herath, Network/Systems
Manager, LEARN

Email: senevih@learn.ac.lk
noc@learn.ac.lk